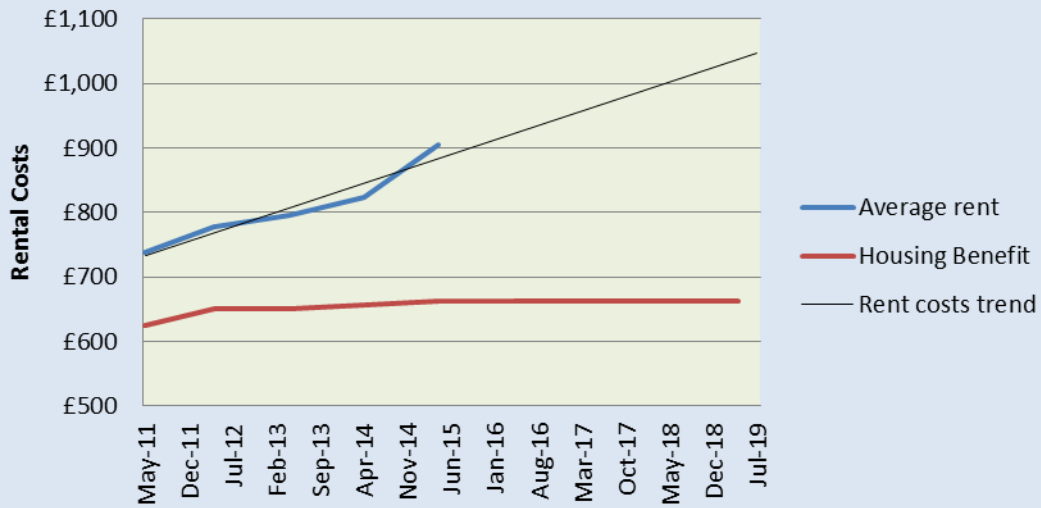


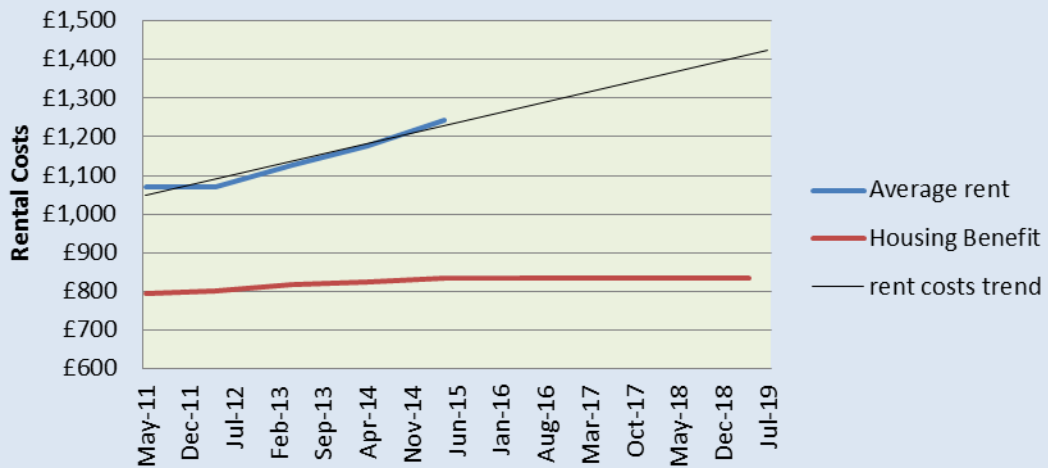
Appendix 1

Room size	1	1	1	1	1	1	1	1	1				
Date	May-11	Apr-12	Apr-13	Apr-14	Apr-15	Apr-16	Apr-17	Apr-18	Apr-19				
Average rent	£738	£777	£795	£823	£904							£127	0.163449
LHA	£625	£650	£650	£657	£663	£663	£663	£663	£663				
Room size	2	2	2	2	2								
Date	May-11	Apr-12	Apr-13	Apr-14	Apr-15	Apr-16	Apr-17	Apr-18	Apr-19				
Average rent	£1,071	£1,070	£1,128	£1,176	£1,244								
LHA	£795	£800	£818	£826	£834	£834	£834	£834	£834				
Room size	3	3	3	3	3								
Date	May-11	Apr-12	Apr-13	Apr-14	Apr-15	Apr-16	Apr-17	Apr-18	Apr-19				
Average rent	£1,338	£1,469	£1,416	£1,416	£1,540								
LHA	£975	£950	£950	£988	£998	£998	£998	£998	£998				
Room size	4	4	4	4	4								
Date	May-11	Apr-12	Apr-13	Apr-14	Apr-15	Apr-16	Apr-17	Apr-18	Apr-19				
Average rent	£1,562	£1,611	£1,680	£1,667	£1,781								
LHA	£1,386	£1,400	£1,400	£1,414	£1,471	£1,471	£1,471	£1,471	£1,471				

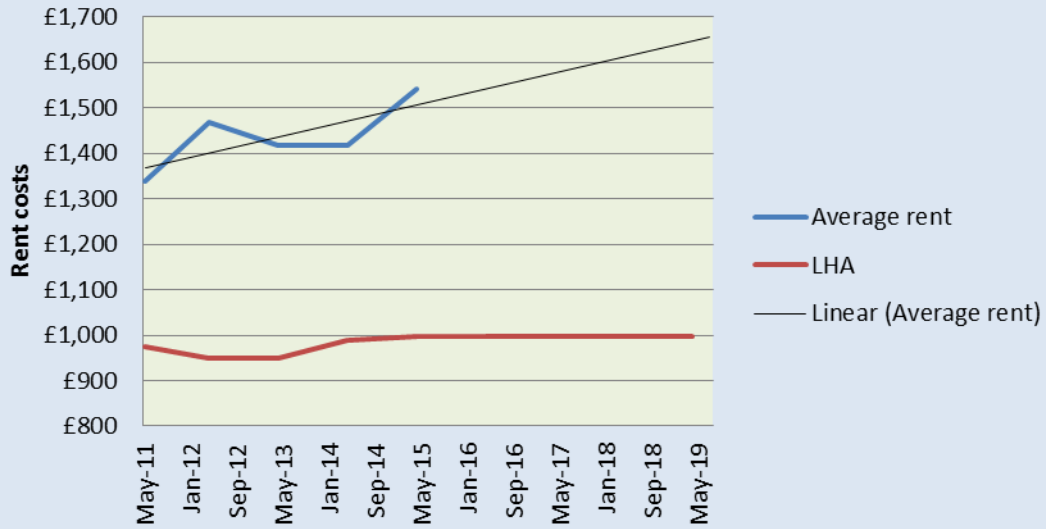
1 bedroom PRS costs forecast



2 bedroom PRS costs forecast



3 bedroom PRS forecast



4 bedroom PRS costs forecast

